

F - T H E T A L E N S

f-125T-10-355

en | Data sheet | 1.1

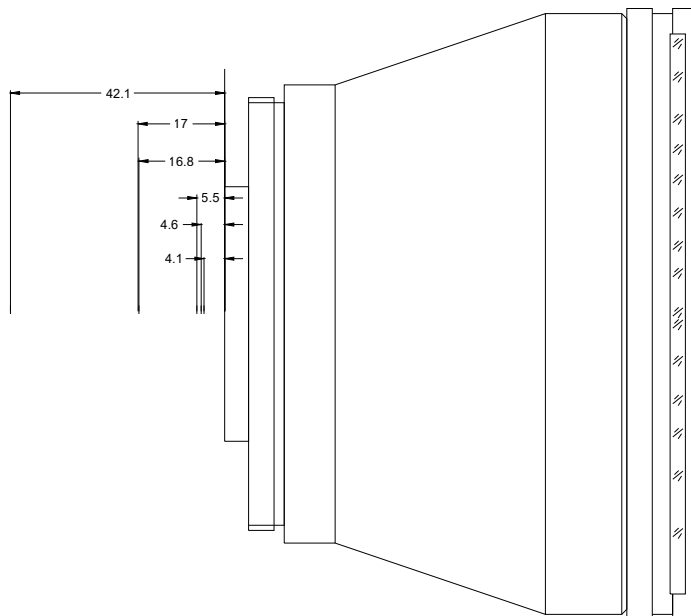
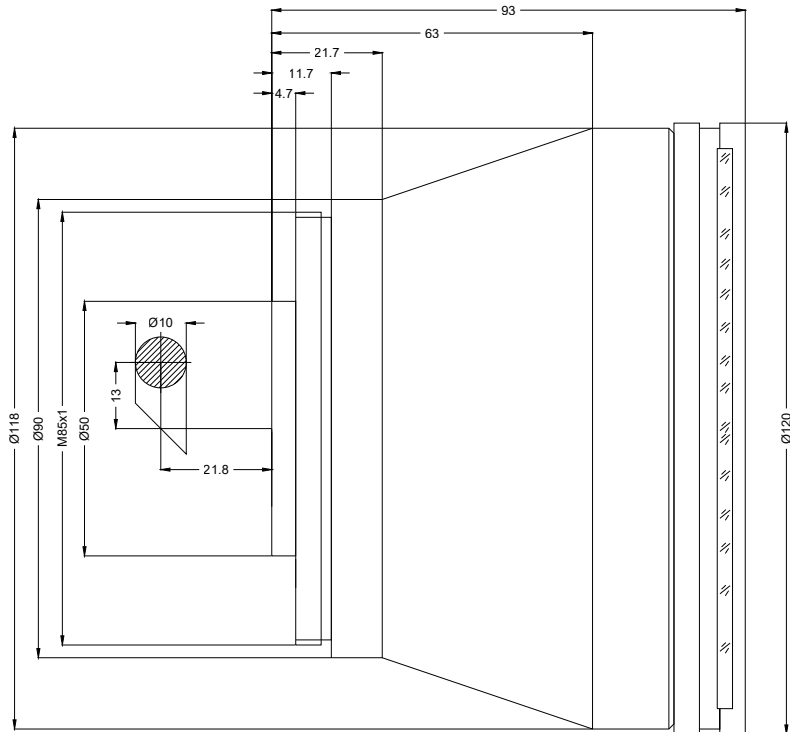
- Telecentric fused silica lens, 355 nm
- Nominal focal length 125 mm
- Max. input beam diameter 10 mm
- Maximum working area 60 x 60 mm



Wavelength	355 nm	Mirror distance m1/m2	13 / 21.8 mm
Nominal focal length	125 mm	Anti-reflective coating	Standard
Effective focal length	128.417 mm	Telecentric error	2.8 °
Flange focal length	253.376 mm	Cooling method	Air
Max. input beam diameter	10 mm	Lens material	Fused silica
Working distance	172.076 mm	Mounting thread	M85x1
Max. scan field	60 x 60 mm	Lens diameter	120 mm
Minimum spot size	8.12 μm		

Information is subject to change without notice.
Product photos are non-binding and may show customized features.





F-Theta lens

f-125T-10-355

Dimensions are given in millimeters and are intended as reference values.
Binding information is available on request.

