

F - T H E T A L E N S

f-167T-10-355-P

en | Data sheet | 1.0

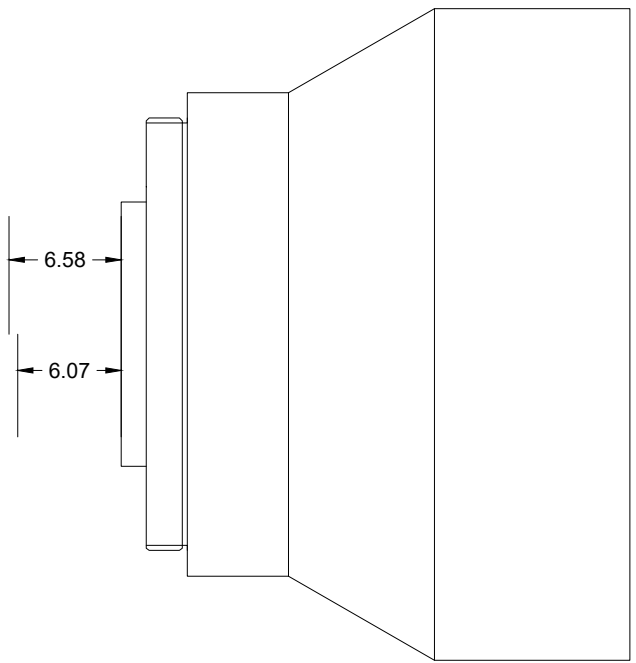
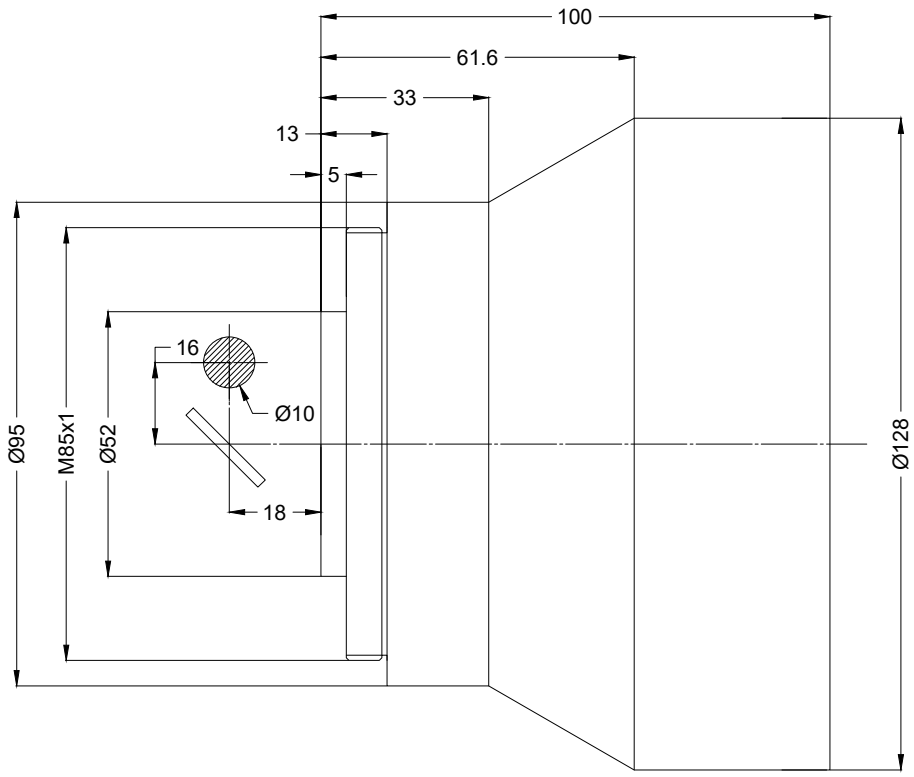
- Telecentric fused silica lens, 355 nm
- Nominal focal length 167 mm
- Max. input beam diameter 10 mm
- Maximum working area 90 x 90 mm
- For high-precision structuring and drilling



Wavelength	355 nm	Minimum spot size	9.75 μ m
Nominal focal length	167 mm	Mirror distance m1/m2	16 / 18 mm
Effective focal length	167.000 mm	Anti-reflective coating	Standard
Flange focal length	317.100 mm	Telecentric error	4.4°
Max. input beam diameter	10 mm	Lens material	Fused silica
Working distance	230.100 mm	Mounting thread	M85x1
Max. scan field	90 x 90 mm	Lens diameter	128 mm

Information is subject to change without notice.
Product photos are non-binding and may show customized features.





F-Theta lens

f-167T-10-355-P

Dimensions are given in millimeters and are intended as reference values.
Binding information is available on request.

