

F - T H E T A L E N S

f-100-8-1030-1080

en | Data sheet | 1.2

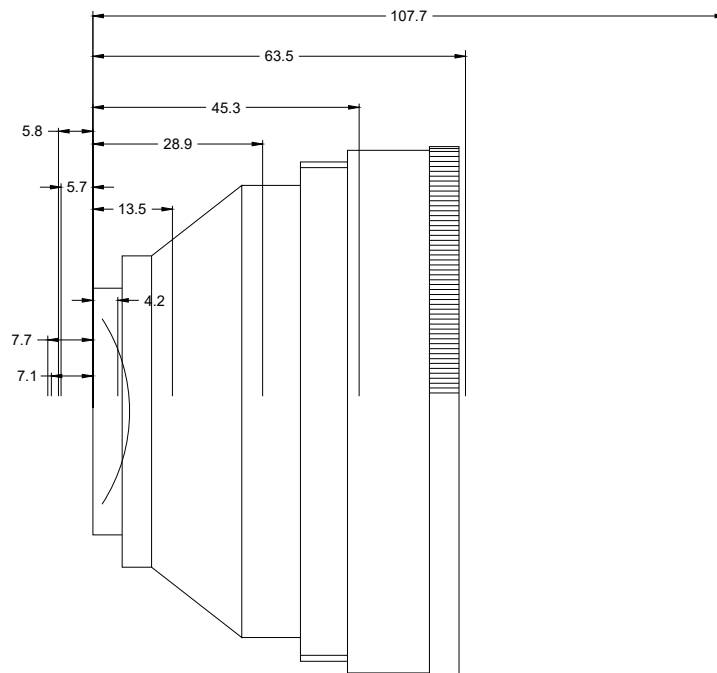
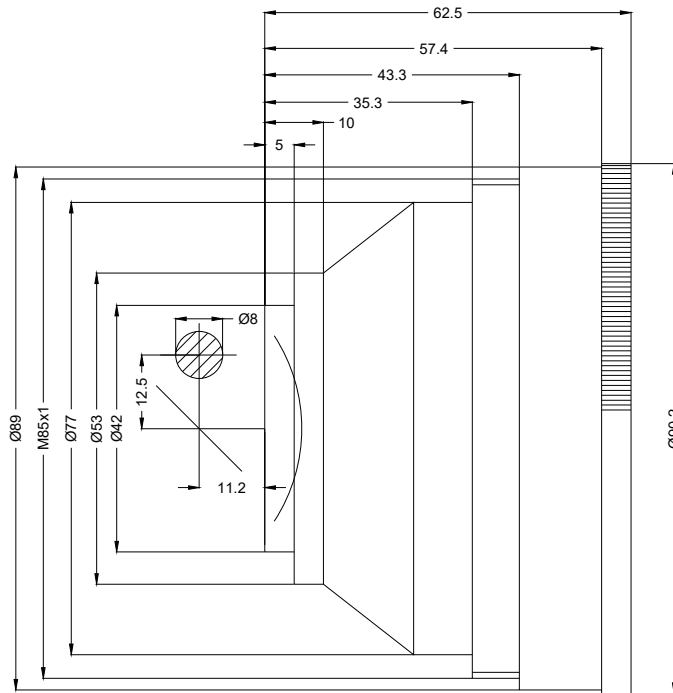
- Fused silica lens, 1030 – 1080 nm
- Nominal focal length 100 mm
- Max. input beam diameter 8 mm
- Maximum working area 60 x 60 mm



Wavelength	1030 – 1080 nm	Minimum spot size	24.34 μ m
Nominal focal length	100 mm	Mirror distance m1/m2	12.5 / 11.2 mm
Effective focal length	100.000 mm	Anti-reflective coating	Standard
Flange focal length	145.489 mm	Cooling method	Air
Max. input beam diameter	8 mm	Lens material	Fused silica
Working distance	126.489 mm	Mounting thread	M85x1
Max. scan field	60 x 60 mm	Lens diameter	90 mm

Information is subject to change without notice.
Product photos are non-binding and may show customized features.





F-Theta lens

f-100-8-1030-1080

Dimensions are given in millimeters and are intended as reference values.
Binding information is available on request.

