

F - T H E T A L E N S

f-425-16-510-550-W

en | Data sheet | 1.0.1

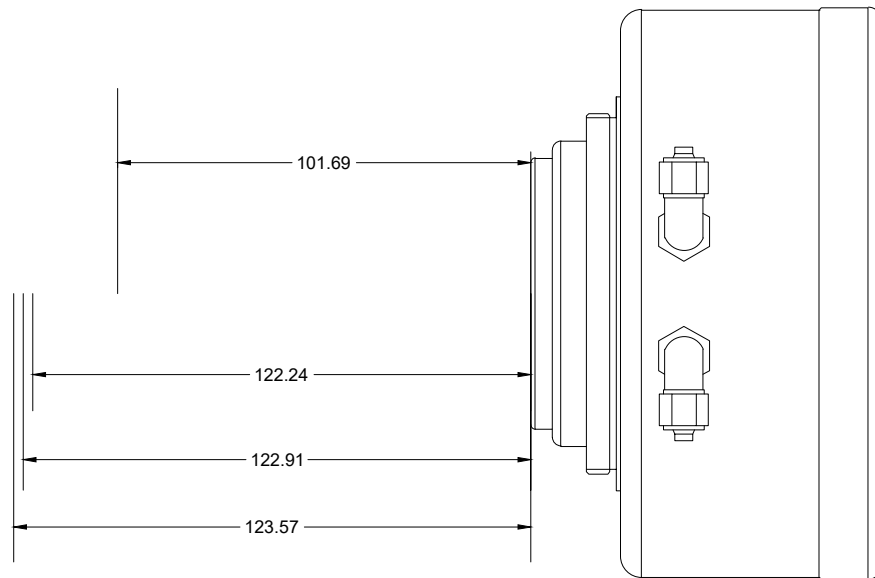
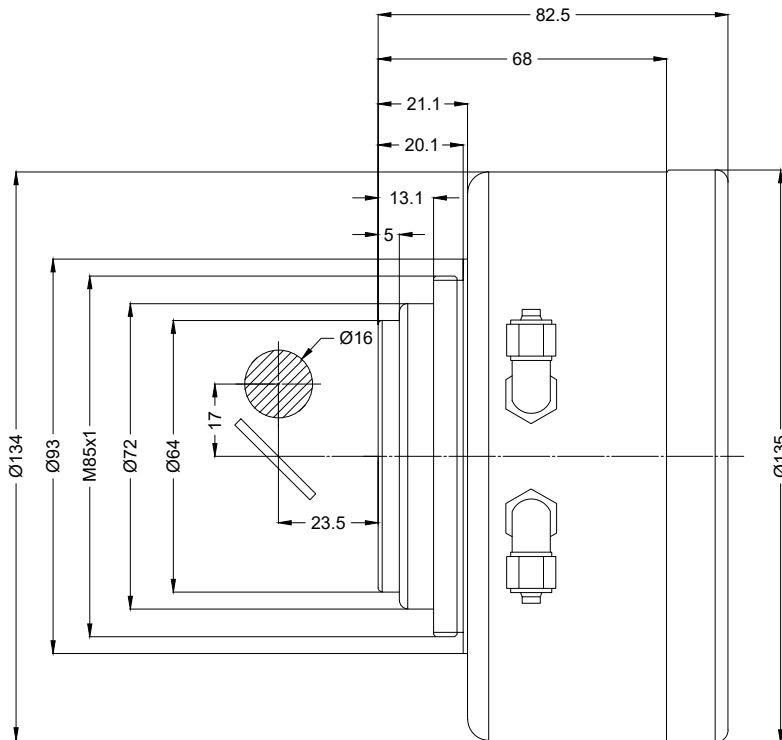
- Fused Silica F-Theta Lens, 510 – 550 nm
- Nominal focal length 425 mm
- Max. input beam diameter 16 mm
- Maximum working area 240 x 240 mm
- Water-cooled, high power compatibility



| | | | |
|--------------------------|--------------|-------------------------|--------------|
| Wavelength | 510 – 550 nm | Minimum spot size | 23,85 µm |
| Nominal focal length | 425 mm | Mirror distance m1/m2 | 17 / 23.5 mm |
| Effective focal length | 425.000 mm | Anti-reflective coating | Standard |
| Flange focal length | 578.120 mm | Cooling method | Water |
| Max. input beam diameter | 16 mm | Lens material | Fused silica |
| Working distance | 515.720 mm | Mounting thread | M85x1 |
| Max. scan field | 240 x 240 mm | Lens diameter | 135 mm |

Information is subject to change without notice.
Product photos are non-binding and may show customized features.





F-Theta lens

f-425-16-510-550-W

Dimensions are given in millimeters and are intended as reference values.
Binding information is available on request.

