

2 D S C A N H E A D

BS-12

en | Data sheet | 1.1.1

- 2-axis laser deflection unit, aperture 12 mm
- High precision for industrial use
- Compact temperature-optimized design
- Outstanding cost-effectiveness



Wavelength	1064 nm ^[1]	Long-term-drift per axis (8 h) (<)	300 µrad
Input beam diameter	12 mm	Cooling method	Passive
Tracking delay	0.18 ms	Control interface	XY2-100-Standard
Writing speed	500 cps ^[2]	Humidity	80% ^[3]
Max. optical deflection (±)	0.393 rad	Supply voltage DC	15 V
Resolution	12 µrad	Input current	3 A
Repeatability (RMS) (<)	22 µrad	Operation temperature	10 – 40 °C
Positioning noise (RMS)	4.5 µrad	Storage temperature	-20 – 60 °C
Max. gain-drift per axis	80 ppm/K	Mechanical dimensions (W × D × H)	99 × 114 × 97.4 mm
Max. offset-drift per axis	30 µrad/K	Net weight	2 kg

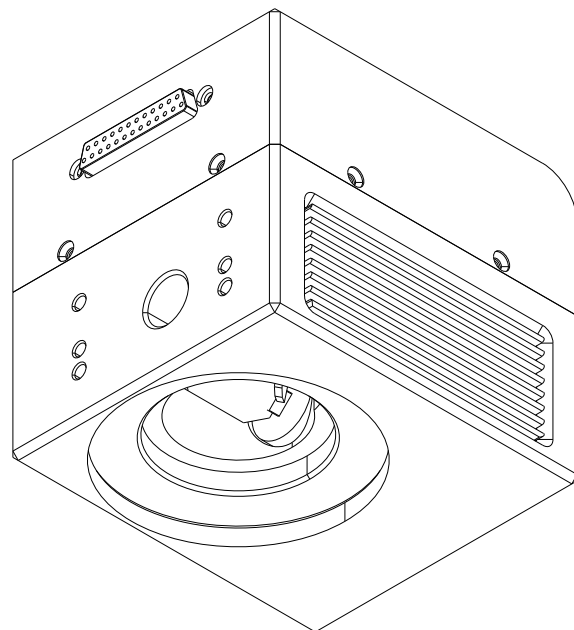
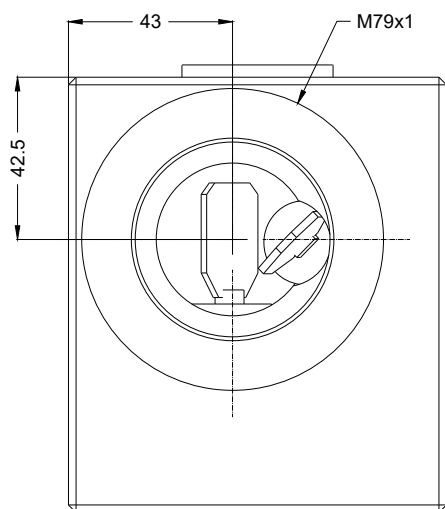
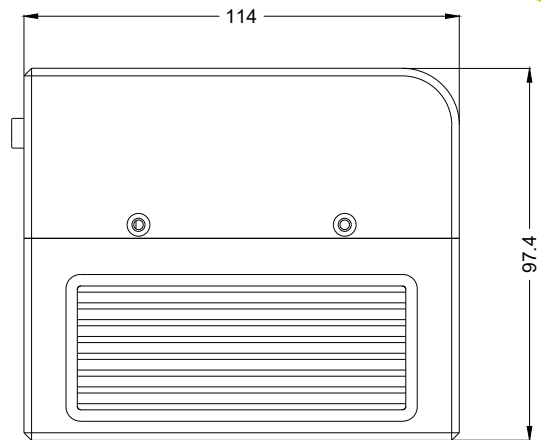
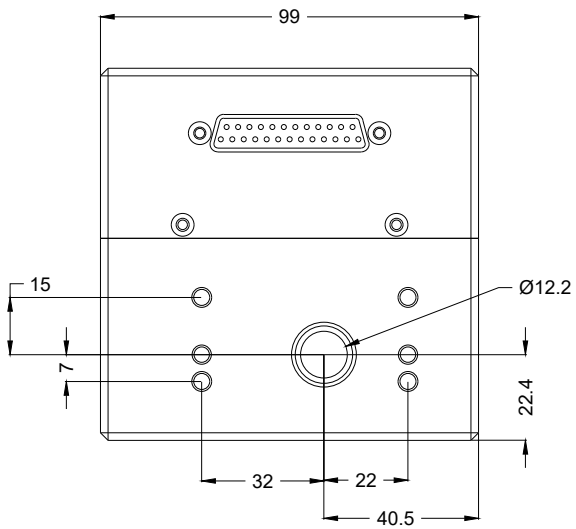
Product customizations are possible on request.

^[1] Other available wavelengths: 355 / 532 / 10600 nm

^[2] f=160 / Hight 1 mm

^[3] Non condensing





2D scan head

BS-12

Dimensions are given in millimeters and are intended as reference values.
Binding information is available on request.

