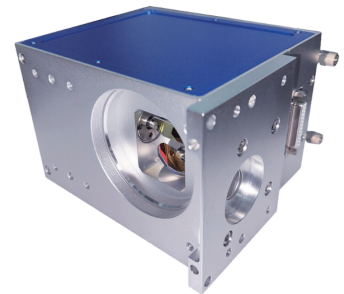


2 D S C A N H E A D

PSH-15-A-W

en | Data sheet | 1.0.2

- Premium 2-axis laser scan head / 15 mm
- Superior precision and minimum drift
- For demanding applications at high laser power up to 2500 Watt (IR, CW)
- Extremely fast up to 60 m/s for linear processing, such as laser texturing

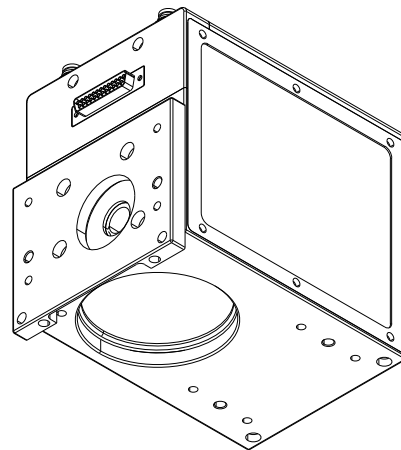
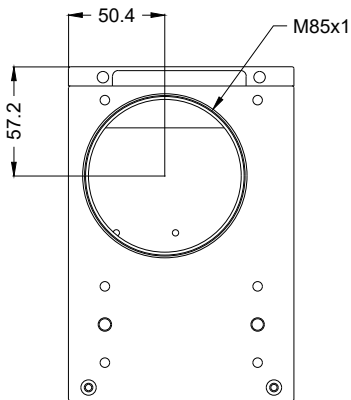
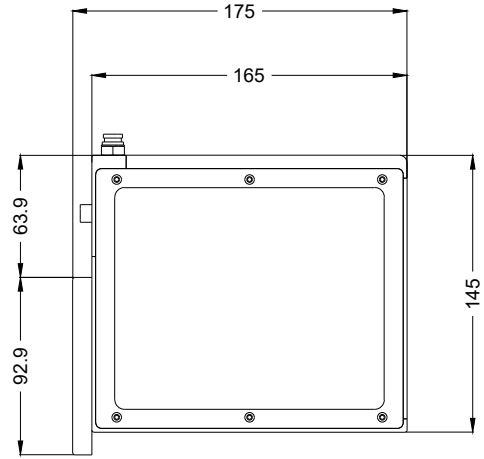
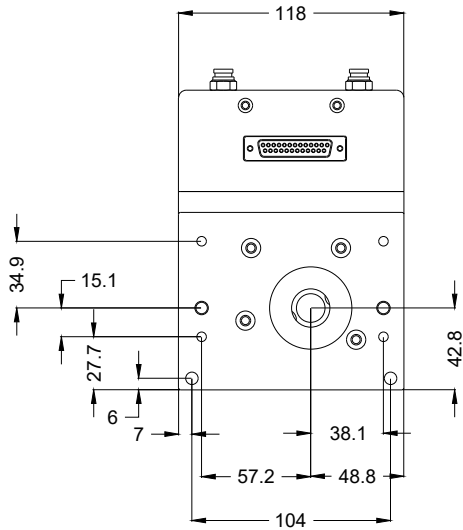


Wavelength	1064 nm
Input beam diameter	15 mm
Max. laser power @ 1064 nm CW (<)	2500 W
Tracking delay	0.16 ms
Writing speed	700 cps ^[1]
Positioning speed (<)	30 m/s
Marking speed	3 m/s
Max. optical deflection (±)	0.35 rad
Resolution	12 µrad
Repeatability (RMS) (<)	2 µrad
Max. gain-drift per axis	20 ppm/K

Max. offset-drift per axis	20 µrad/K
Long-term-drift per axis (8 h) (<)	80 µrad
Cooling method	Water
Cooling flowrate	3 l/min
Control interface	XY2-100
Supply voltage DC	15 V
Input current	5 A
Operation temperature	15 – 35 °C
Storage temperature	-35 – 60 °C
Mechanical dimensions (W × D × H)	118 × 165 × 145 mm
Net weight	4.65 kg

^[1] f=160 / Hight 1 mm





2D scan head

PSH-15-A-W

Dimensions are given in millimeters and are intended as reference values.
Binding information is available on request.

