

2 D SCAN HEAD

PSH-30-M-W

en | Data sheet | 1.1.1

- Premium 2-axis laser scan head / 30 mm
- Laser powers up to 8 kW, CW 1064 nm
- Highest precision with minimal drift
- Designed for demanding laser applications

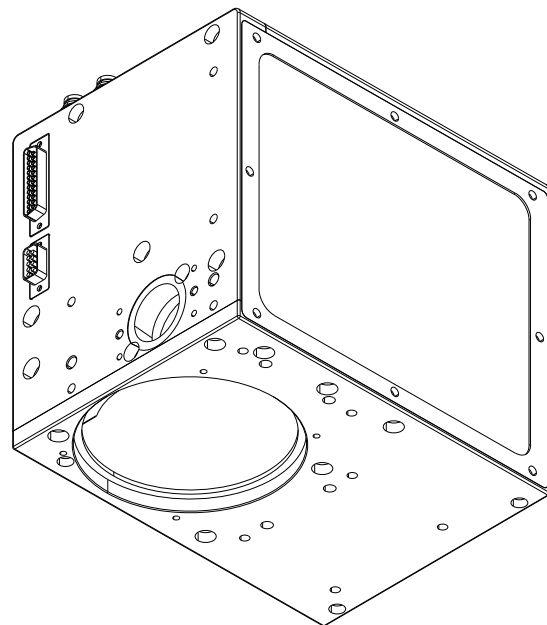
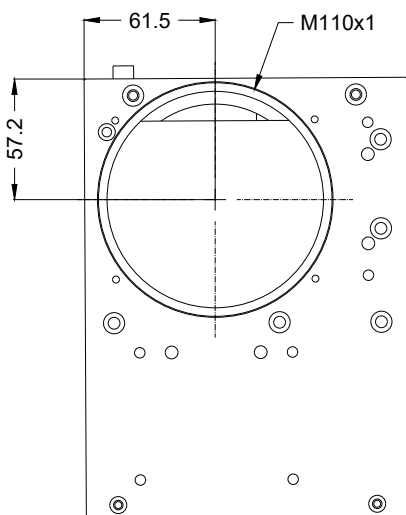
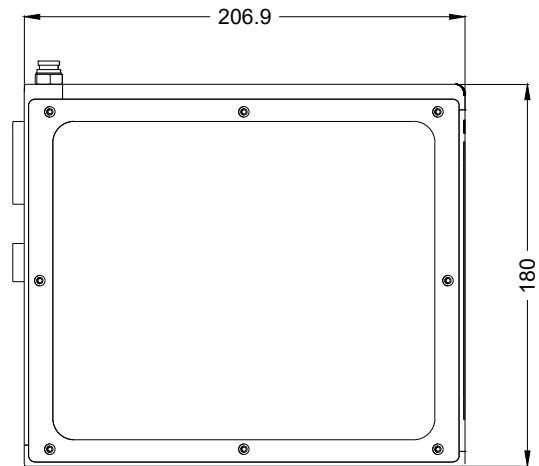
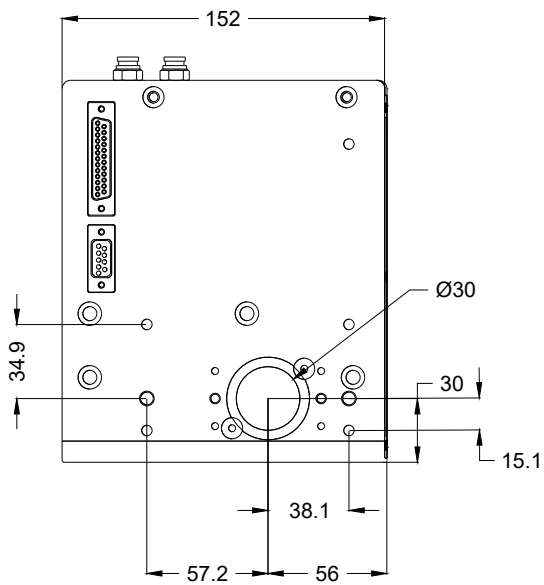


Wavelength	1064, 10600 nm
Input beam diameter	30 mm
Tracking delay	0,4 ms
Writing speed	280 cps
Marking speed	1,2 m/s
Max. optical deflection	0,35 rad
Resolution	12 µrad
Repeatability (RMS)	2 µrad
Positioning noise (RMS)	2 mrad
Max. gain-drift per axis	20 ppm/K
Max. offset-drift per axis	20 µrad/k

Long-term-drift per axis (8 h)	80 µrad
Cooling method	Water
Cooling power	3 l/min
Control interface	XY2-100-Standard
Humidity	80% ^[1]
Supply voltage DC	15 V
Current consumption	5 A
Operation temperature	15 – 35 °C
Storage temperature	-35 – 60 °C
Mechanical dimensions (W × D × H)	152 × 206.9 × 180 mm
Net weight	6.6 kg

^[1] Non condensing





2D scan head

PSH-30-M-W

Dimensions are given in millimeters and are intended as reference values.
Binding information is available on request.

