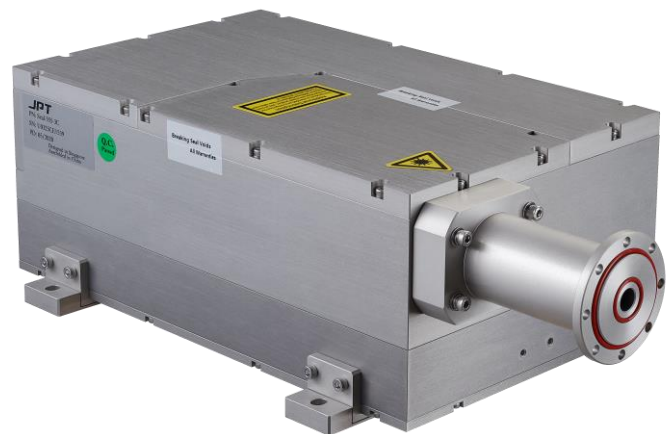


# DPSS GR-20-W-AIO

- Compact AIO design
- High Power Stability
- Pulse Energy 250  $\mu$ J
- Easy Integration
- Water cooled



## TECHNICAL SPECIFICATIONS:

### DPSS GR-20-W-AIO

|                                   |                         |
|-----------------------------------|-------------------------|
| Central Wavelength                | 532 nm                  |
| Nominal Output Power              | > 20 W @ 80 kHz         |
| Beam Quality                      | $M^2 < 1.2$             |
| Beam Divergence                   | $\leq 2$ mrad           |
| Pulse Frequency Range             | 40 – 300 kHz            |
| Pulse Width                       | < 18 ns @ 80 kHz        |
| Output Beam Diameter <sup>1</sup> | 0.8 $\pm$ 0.1 mm        |
| Beam Roundness                    | > 90%                   |
| Pulse-to-Pulse Stability          | $\leq 3\%$ RMS @ 40 kHz |

|                         |                    |
|-------------------------|--------------------|
| Average Power Stability | $\pm 3\%$ over 24h |
| Polarization Ratio      | > 100:1            |
| Cooling Method          | Water              |
| Dimension W*D*H         | 337*180*114        |
| Supply DC Voltage (VDC) | 36 V               |
| Current Consumption     | 9.7 A              |
| Power Consumption       | 350 W              |
| Operation Temperature   | 10 – 35 °C         |
| Storage Temperature     | -15 – 50 °C        |

<sup>1</sup> Optional equipped with 6x or 10x Beam Expander



Manufacturer:

**JPT**