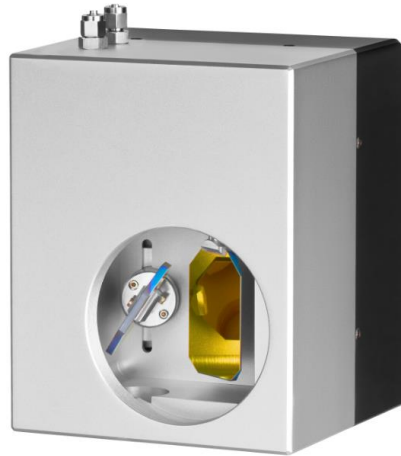


## 2-Axis Deflection Unit

# BS-30

- High Accuracy
- Large Aperture
- Fast Processing
- Competitive Price
- High Power Densities



### TECHNICAL SPECIFICATIONS:

#### BS-30

Input Aperture	30 mm
Wavelength	355, 450, 532, 1064, 10600 nm
Tracking error time	1.2 ms
Positioning Speed <sup>1</sup>	> 3 m/s
Typical Deflection	± 0.25 rad
Resolution	12 µrad
Repeatability (RMS)	< 22 µrad
Max. Gaindrift <sup>2</sup>	80 ppm/K
Max. Offsetdrift <sup>2</sup>	30 µrad/K
Cooling Method	Passive or Water

Long-Term Drift (8h) <sup>2</sup>	< 300 µrad
Zero Offset	< 5mrad
Digital Interface	XY2-100 Protocol
Ambient Temperature	+10 to +40 °C
Storage Temperature	-20 to +60 °C
Humidity	≤ 80% Non-condensing
Voltage	±15 V DC
Current	max. 5 A
Weight	Approx. 5.0 kg
Dimensions L x W x H	198 x 158 x 160 mm

<sup>1</sup> F-Theta f=163 / field size 120 x 120 mm

<sup>2</sup> Drift per axis

<sup>3</sup> After warming-up, variation of ambient temperature <1K