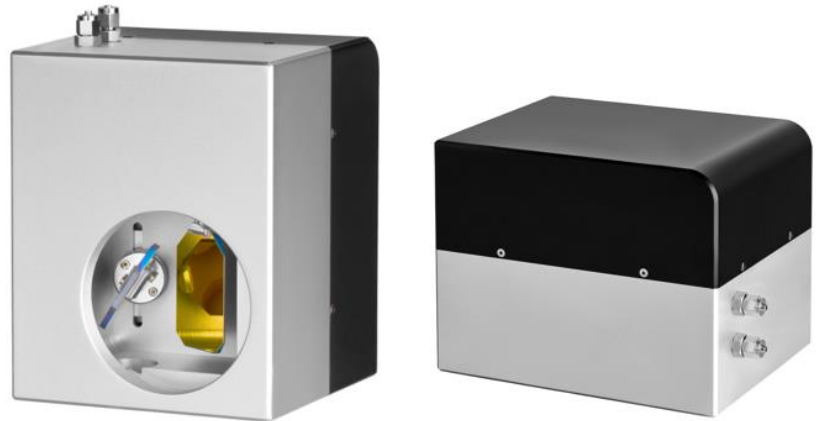


2-Axis Deflection Unit

BS-30

- High Accuracy
- Large Aperture
- Competitive Price
- High Power Densities



TECHNICAL SPECIFICATIONS:

BS-30			
Input Aperture	30 mm	Long-Term Drift (8h) ²	< 300 μ rad
Wavelength	355, 450, 532, 1064, 10600 nm	Zero Offset	< 5mrad
Tracking error time	1.2 ms	Digital Interface	XY2-100 Protocol
Marking Speed ¹	< 0.7 m/s	Ambient Temperature	+10 to +40 °C
Positioning Speed ¹	< 3 m/s	Storage Temperature	-20 to +60 °C
Typical Deflection	\pm 0.25 rad	Humidity	\leq 80% Non-condensing
Resolution	12 μ rad	Voltage	\pm 15 V DC
Repeatability (RMS)	< 22 μ rad	Current	max. 5 A
Max. Gaindrift ²	80 ppm/K	Weight	Approx. 5.0 kg
Max. Offsetdrift ²	30 μ rad/K	Dimensions L x W x H	198 x 158 x 160 mm
		Cooling Method	Passive or Water

¹ F-Theta f=163 / field size 120 x 120 mm

² Drift per axis

³ After warming-up, variation of ambient temperature <1K