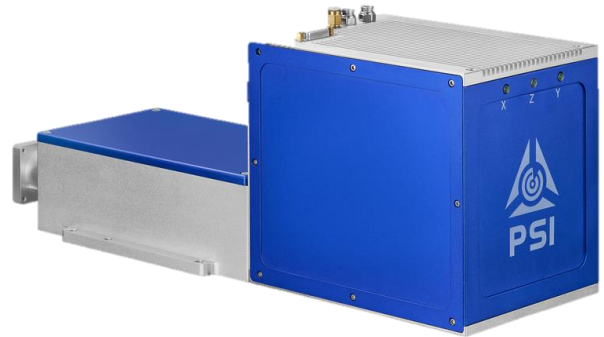


3-Axis-Scan Module

PSH-3D-[20-8]

- Premium 3-Axis Scan Head
- Large Working Fields
- Outstanding Low Drift
- Highest Repeatability
- Laser Power up to 500 Watt



TECHNICAL SPECIFICATIONS:

DFM[20-8]

Input Aperture (DFM)	8 mm
Output Aperture (DFM)	20 mm
Wavelength	1030 – 1090 nm
Scan Field ¹	200 mm x 200 mm
Working Distance	285 mm
Tracking Error Time (DFM)	< 1 ms
Travel Speed (DFM)	≤ 0.15 m/s
Repeatability (DFM)	0.3 μm
Long-Term Drift (8h) ² (DFM)	< 3 μm
Max. Stroke	±3.5 mm

PSH-3D-20-H-W

Input Aperture	20 mm
Wavelength	1030 – 1090 nm
Spot Size 1/e ² ³	30 μm
Tracking Error Time	≤ 0.28 ms
Typical Deflection	±0.418 rad
Resolution	12 μrad
Repeatability (RMS)	< 2 μrad
Max. Gaindrift ²	10 μrad/K
Max. Offsetdrift ²	8 μrad/K
Long-Term Drift (8h) ²	< 90 μrad

GENERAL SPECIFICATIONS:

Digital Interface	XY2-100 Protocol
Ambient Temperature	+15 to +35 °C
Storage Temperature	-10 to +60 °C
Humidity	≤ 75% Non-condensing
Voltage	±15V DC

Current	max. 5 A RMS
Weight	Approx. 8 kg
Dimensions L x W x H	355 x 134 x 155 mm
Cooling Method	Water and Air Flush

¹ Scan Fields available 150 mm x 150 mm – 250 mm x 250 mm

² Drift per axis

³ Wavelength 1030 - 1090 nm, M² = 1.0