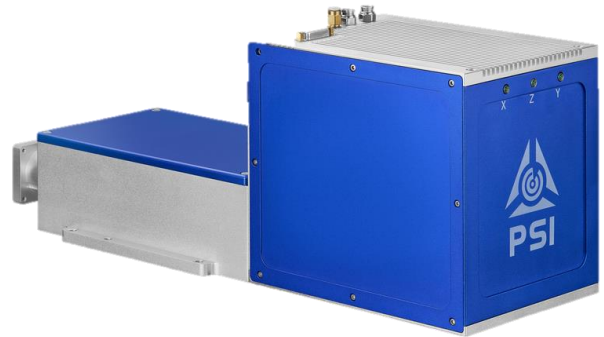


3-Axis-Scan Module

PSH-3D-[30-15]

- Premium 3-Axis Scan Head
- Large Working Fields
- Outstanding Low Drift
- Highest Repeatability
- Laser Power up to 2000 Watt



TECHNICAL SPECIFICATIONS:

DFM[30-15]		PSH-3D-30-H-WA-2.1	
Input Aperture (DFM)	15 mm	Input Aperture	30 mm
Output Aperture (DFM)	30 mm	Wavelength	1030 – 1090, 10600 nm
Wavelength	1030 – 1090 nm	Spot Size $1/e^2$ ³	50 μ m
Scan Field ¹	500 mm x 500 mm	Tracking Error Time	\leq 0.4 ms
Working Distance	681 mm	Typical Deflection	\pm 0.418 rad
Tracking Error Time (DFM)	< 1 ms	Resolution	12 μ rad
Travel Speed (DFM)	\leq 0.15 m/s	Repeatability (RMS)	< 2 μ rad
Repeatability (DFM)	0.3 μ m	Max. Gaindrift ²	15 μ rad/K
Long-Term Drift (8h) ² (DFM)	3 μ m	Max. Offsetdrift ²	10 μ rad/K
Max. Stroke	\pm 3.5 mm	Long-Term Drift (8h) ²	< 100 μ rad

GENERAL SPECIFICATIONS:

Digital Interface	XY2-100 Protocol	Current	max. 5 A RMS
Ambient Temperature	+15 to +35 °C	Weight	Approx. 10.4 kg
Storage Temperature	-10 to +60 °C	Dimensions L x W x H	441.9 x 163 x 180 mm
Humidity	\leq 75% Non-condensing	Cooling Method	Water and Air Flush
Voltage	\pm 15V DC		

¹ Scan Fields available 400 mm x 400 mm - 600 mm x 600 mm

² Drift per axis

³ Wavelength 1030- 1090 nm, $M^2 = 1.0$